

Products

B4 series | Illuminated double-pole switch 16A quick connection 6.3 black body



sample image

Wiring diagrams



Terminal type



accessories

Body colour



Actuator colour



Marking

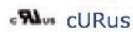


Rating

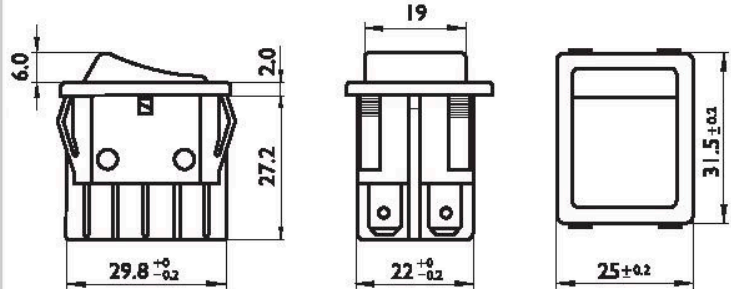
16 (6) A / 250 VAC
10 (4) A / 250 VAC - 5E4
T120/55 °C

20 A / 125 VAC
1/3 HP - 125 VAC
16 A / 250 VAC
3/4 HP - 250VAC
T105 °C

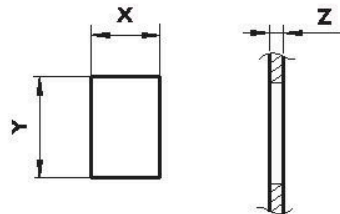
Approvals



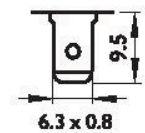
Dimensions (mm)



Cut out (mm)



Termination



Z	Y	X
0.7-1.25	30.0 $^{+0.1}$	22.0 $^{-0.3}$
1.25-2.0	30.2 $^{+0.1}$	22.0 $^{-0.3}$
2.0-3.0	30.6 $^{+0.1}$	22.0 $^{-0.3}$
3.0-4.0	30.8 $^{+0.1}$	22.0 $^{-0.3}$