

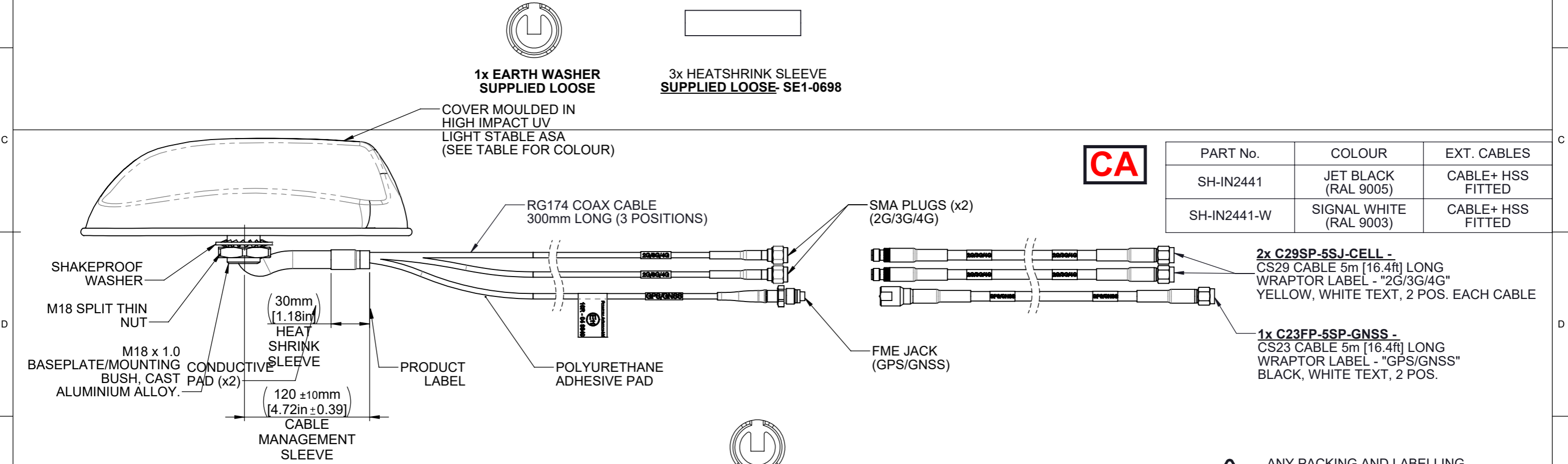
1	2	3	4	5	6	7	8
3RD ANGLE PROJECTION	DO NOT SCALE	DENOTES LATEST ISSUE CHANGES	DENOTES CRITICAL VALUE	© 2019 A3 THIS DOCUMENT MUST NOT BE COPIED OR DISCLOSED TO A THIRD PARTY WITHOUT THE WRITTEN CONSENT OF PANORAMA ANTENNAS LTD.			
TOLERANCES UNLESS OTHERWISE STATED							
0 DEC. PLACE ±0.5		2 DEC. PLACES ±0.1					
1 DEC. PLACE ±0.2		ANGULAR ±1°					

OPERATING FREQUENCIES:
 CELLULAR: 698-960/1710-3800 MHz
 GPS/GNSS: 1562-1612 MHz 26dB LNA



DWG. No.	SH-IN2441-VAR	
PART No.	COLOUR	EXT. CABLES
SH-IN2441-LC	JET BLACK (RAL 9005)	CABLE+ HSS LOOSE
SH-IN2441-W-LC	SIGNAL WHITE (RAL 9003)	CABLE+ HSS LOOSE

ANY PACKING AND LABELLING REQUIREMENTS MUST BE FOLLOWED

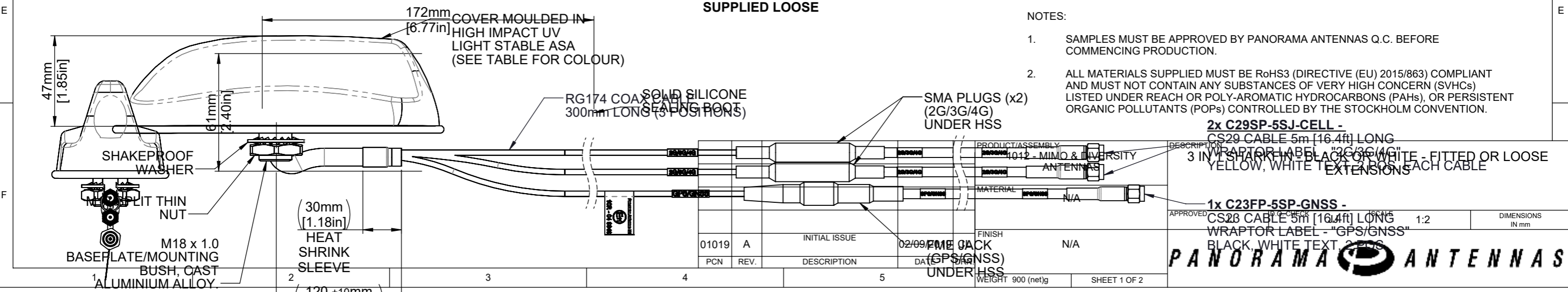


PART No.	COLOUR	EXT. CABLES
SH-IN2441	JET BLACK (RAL 9005)	CABLE+ HSS FITTED
SH-IN2441-W	SIGNAL WHITE (RAL 9003)	CABLE+ HSS FITTED

2x C29SP-5SJ-CELL - CS29 CABLE 5m [16.4ft] LONG WRAPTOR LABEL - "2G/3G/4G" YELLOW, WHITE TEXT, 2 POS. EACH CABLE

1x C23FP-5SP-GNSS - CS23 CABLE 5m [16.4ft] LONG WRAPTOR LABEL - "GPS/GNSS" BLACK, WHITE TEXT, 2 POS.

ANY PACKING AND LABELLING REQUIREMENTS MUST BE FOLLOWED



- NOTES:
- SAMPLES MUST BE APPROVED BY PANORAMA ANTENNAS Q.C. BEFORE COMMENCING PRODUCTION.
 - ALL MATERIALS SUPPLIED MUST BE RoHS3 (DIRECTIVE (EU) 2015/863) COMPLIANT AND MUST NOT CONTAIN ANY SUBSTANCES OF VERY HIGH CONCERN (SVHCs) LISTED UNDER REACH OR POLY-AROMATIC HYDROCARBONS (PAHs), OR PERSISTENT ORGANIC POLLUTANTS (POPs) CONTROLLED BY THE STOCKHOLM CONVENTION.

01019	A	INITIAL ISSUE	02/09/2019	
PCN	REV.	DESCRIPTION	DATE	SCALE